



# Cathance River Education Alliance

Volume 1, Issue 2

September 2006

## Cathance River Ecology Center Ready for Action

With a little help from their friends, the Cathance River Education Alliance (CREA) has transformed an antique post and beam barn into a state-of-the-art environmental learning center. The Center will serve as a staging point and meeting place for environmental studies and nature walks for area students and the general public.

Over the last several years CREA has helped facilitate dozens of environmental studies and curriculum centering around the wildlife on the preserve. These in-



The Cathance River Ecology Center will serve as a staging point for environmental studies.

vestigations have included spider and insect census, water-quality monitoring and vernal pool study. With the availability of the Ecology Center, CREA hopes to expand the envi-

ronmental learning opportunities available to students of all ages.

*Please see Ecology Center Page 2*

## Colby College Professors Perform Small Mammal Study on Preserve

Using the Cathance River Ecology Center



The recent Colby College study was led by Professors Danielle Garneau and Stacey Lane.

for their base of operations, Colby College Professors Danielle Garneau and Stacey Lane, along with three Colby students, recently completed an investigation into the small mammal population on the Cathance River Preserve.

This was a collaborative study for the professors as each utilized the same mammals though they are

performing different studies. Dr. Garneau's research goal is to determine the distribution and abundance of small mammals in urban environments such as housing developments, urban parks and college campuses. Dr. Lance's study focused on small mammals as host reservoirs for tick-borne diseases.

*Please see Colby, Page 3*

### Board of Directors

*President*  
Lynda Bernier

*Vice President*  
Dana Cary

*Secretary*  
Jane Littlefield

*Treasurer*  
Janvier Smith

*Directors*  
Edward Couch  
Cory Favreau  
Jon Leahy  
Judy McCollum  
Marty Meacham  
Carla Rensenbrink  
John Rensenbrink

*School Liaisons*  
Jeff Davison  
Hannah Weddle



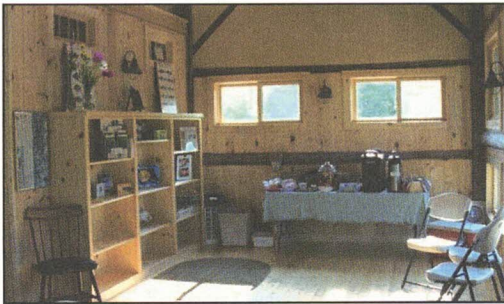


## Ecology Center *continued from Page 1*

### ***Public Invited to Grand Opening***

CREA members and the general public are invited to attend the Ecology Center grand opening that is taking place Saturday, September 30th from 10:00 a.m. to 2:00 p.m. The celebration will take place at the Ecology Center. The day's events include guided hikes and tours of the Center.

Author Franklin Burroughs and photographer Heather Perry – the creative energies behind “Confluence: Merrymeeting Bay” – will be on-hand to sign books and discuss Merrymeeting Bay and our area's wonderful natural resources.



The Ecology Center will include a library and other educational resources.

There will be a special grand opening for educators, which is scheduled for September 22nd.

CREA is very grateful to the many individuals and organizations who have contributed to the Ecology Center. Organizations providing major gifts on behalf of CREA and the Ecology Center include Hancock Lumber, State Farm Insurance, the Senter Fund, Davis Conservation Fund, Merrymeeting Bay Trust and Highland Green.



Residents from OceanView at Falmouth received a personal tour of the new Ecology Center before hitting the trails for a guided hike with CREA Executive Director, Rick Wilson.

## **What Others are Saying About CREA**

**Becoming a CREA member is a great investment in helping create tomorrow's stewards.**

Take it from the professionals who know CREA...

“There appears to be no end to the learning opportunities, both academic and affective, for our students. Thanks again for your support, encouragement, materials, and guidance. CREA has made a huge difference in making our curriculum come alive.”

*Jeff Davison Mt. Ararat High School*

“CREA started out with a vision, and in a few years time, has succeeded in establishing a well-founded, hands-on, science program. I am very grateful for what CREA has accomplished to date and look forward to things yet to come”.

*John P. Lortie, CWB, PWS  
President of Woodlot Alternatives*

“CREA provides, through their dedication and commitment to professional development, an avenue for our schools to offer quality environmental education and environmental awareness. I applaud their work and look forward to watching the Alliance build a local field lab for our young people”.

*Patricia Maloney, Coordinator  
Maine Project Learning Tree / Maine State Forest Service*

## Colby Study *continued from Page 1*

The researchers set approximately fifty traps through the preserve in order to capture small mammals as they foraged for food during the night. No animals were hurt during the study.



This common White Footed Mouse was among the subjects included in the recent field study on the Preserve.

Species	3-Aug	4-Aug	5-Aug	6-Aug	7-Aug	8-Aug	9-Aug	Weekly-Total	%Total
Deer	13	6	12	11	9	4	6	61	17
WF mouse	12	9	8	19	19	22	13	102	29
Peromyscus	2	2	2	3	1	1	0	11	3
flying squirrel	1	0	0	0	1	3	2	7	2
red squirrel	0	0	0	1	0	0	0	1	0
jumping mouse	1	0	0	0	0	0	1	2	1
chipmunk	2	2	2	0	2	0	3	11	3
ST shrew	0	2	4	4	1	1	4	16	5
masked shrew	0	0	0	0	1	0	1	2	1
red-backed vole	1	0	0	0	0	0	1	2	1
empty	18	29	22	13	17	19	20	138	39
sum	50	50	50	51	51	50	51	353	100
				+1 pitfall	+1 pitfall		+1 pitfall		

This chart details the small mammals identified on the Cathance River Nature Preserve during the week-long study performed by Colby College professors and students.

## Cathance River Education Alliance

### Membership Information

- ☐ Contributor (\$25)    ☐ Steward (\$250)  
☐ Friend (\$50)    ☐ Corporate Membership Level (\$500)  
☐ Mentor (\$100)

#### Refer a Friend!

Please send my friend CREA membership information:

Name \_\_\_\_\_

Address \_\_\_\_\_

Name \_\_\_\_\_

Address \_\_\_\_\_

City/Town \_\_\_\_\_ State \_\_\_\_\_ Zip \_\_\_\_\_

E-mail (optional) \_\_\_\_\_ Phone (optional) \_\_\_\_\_

Please make checks payable to "CREA."

Please detach and return to CREA, P.O. Box 187 Topsham, ME 04086. Post Office will not deliver without postage.

**Thank you!**

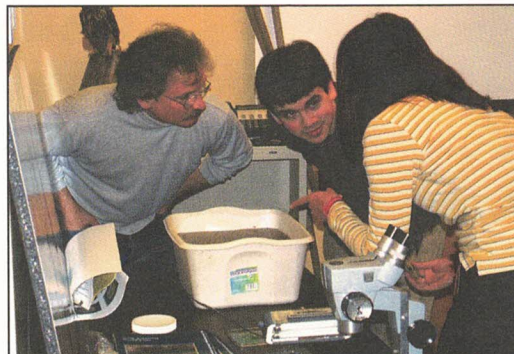
CREA is a registered 501(c)3 non-profit. All donations are entirely tax deductible.



Cathance River Education Alliance  
P.O. Box 187  
Topsham, ME 04086

### About CREA

CREA's goal is to encourage and sponsor environmental, historical, and cultural appreciation and enjoyment of the Cathance River watershed, a natural gem in the midst of ongoing development in Midcoast Maine. This effort includes trail construction and maintenance, recreational and interpretive programs, providing educational resources for area students and teachers, and advocacy of good stewardship practices.



### 2006 Event Schedule

#### **Common Good Day**

Saturday, September 16th

#### **Open House For Area Educators**

Friday, September 22nd

#### **Fall Foliage Hike & Ecology Center Grand Opening**

Saturday, September 30th 10:00 am to 2:00 pm

#### **Guided Nature Walk**

Saturday, October 14th 10:00 am

#### **Nature Hike**

Saturday, October 28th 10:00 am

#### **Nature Hike**

November 18th 10:00 am

Led by Brunswick High School Outing Club

**\*Visit [www.creamaine.org](http://www.creamaine.org) for more information on upcoming events.**